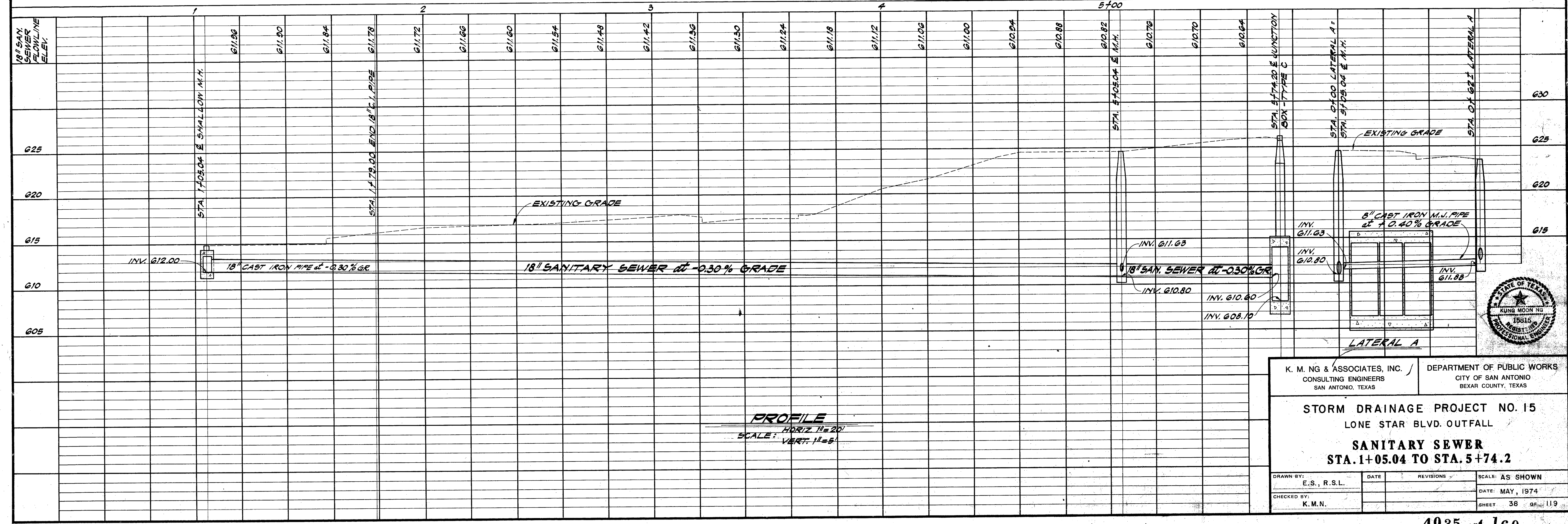


AS BUILT
DATE: AUGUST 1, 1981

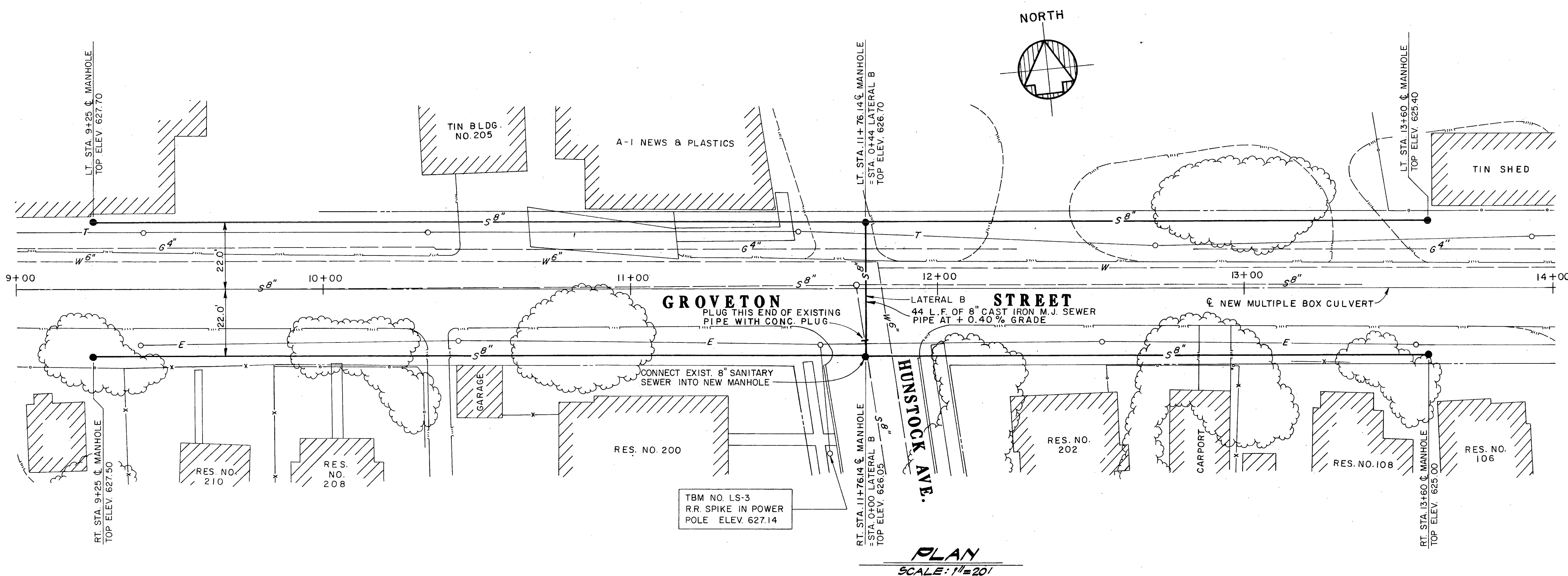


K. M. NG & ASSOCIATES, INC. / DEPARTMENT OF PUBLIC WORKS
CONSULTING ENGINEERS / CITY OF SAN ANTONIO
SAN ANTONIO, TEXAS / BEXAR COUNTY, TEXAS

STORM DRAINAGE PROJECT NO. 15
LONE STAR BLVD. OUTFALL

SANITARY SEWER
STA. 1+05.04 TO STA. 5+74.2

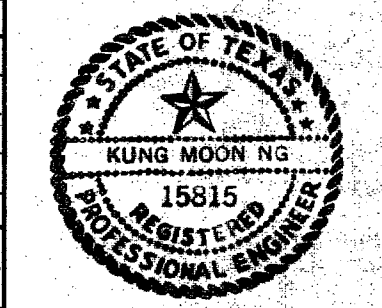
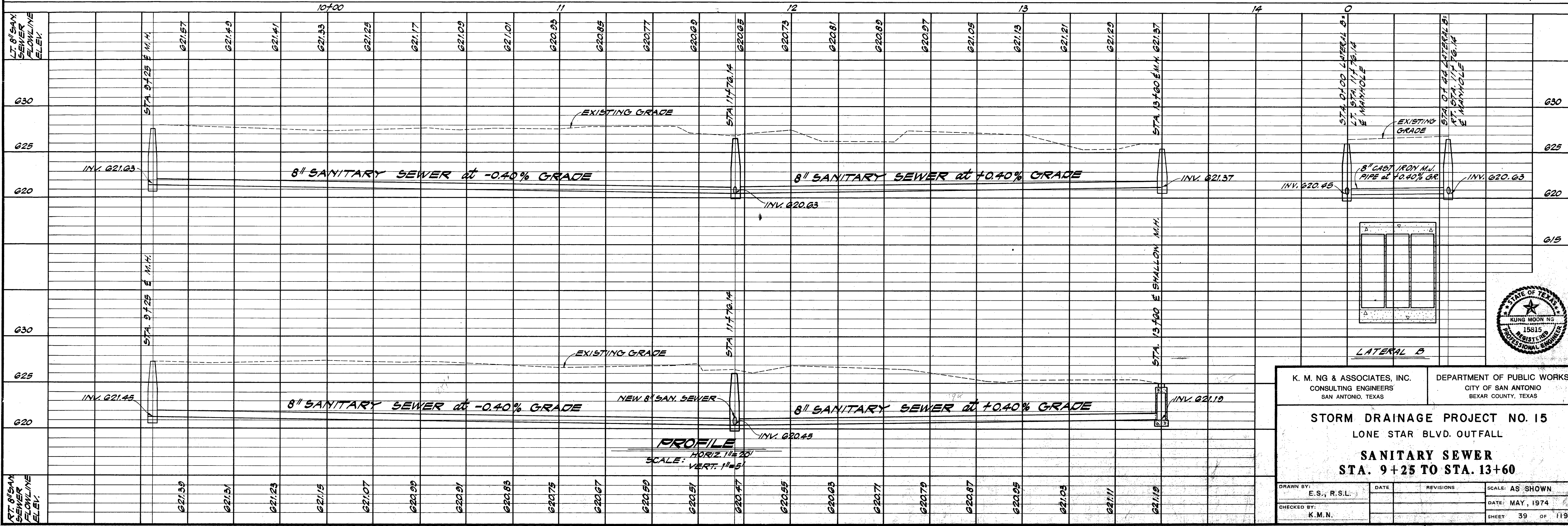
DRAWN BY: E.S., R.S.L. / DATE: / REVISIONS: / SCALE: AS SHOWN
CHECKED BY: K.M.N. / DATE: MAY, 1974 / SHEET 38 OF 119



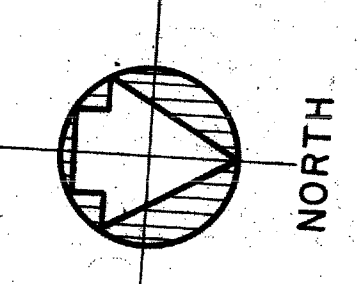
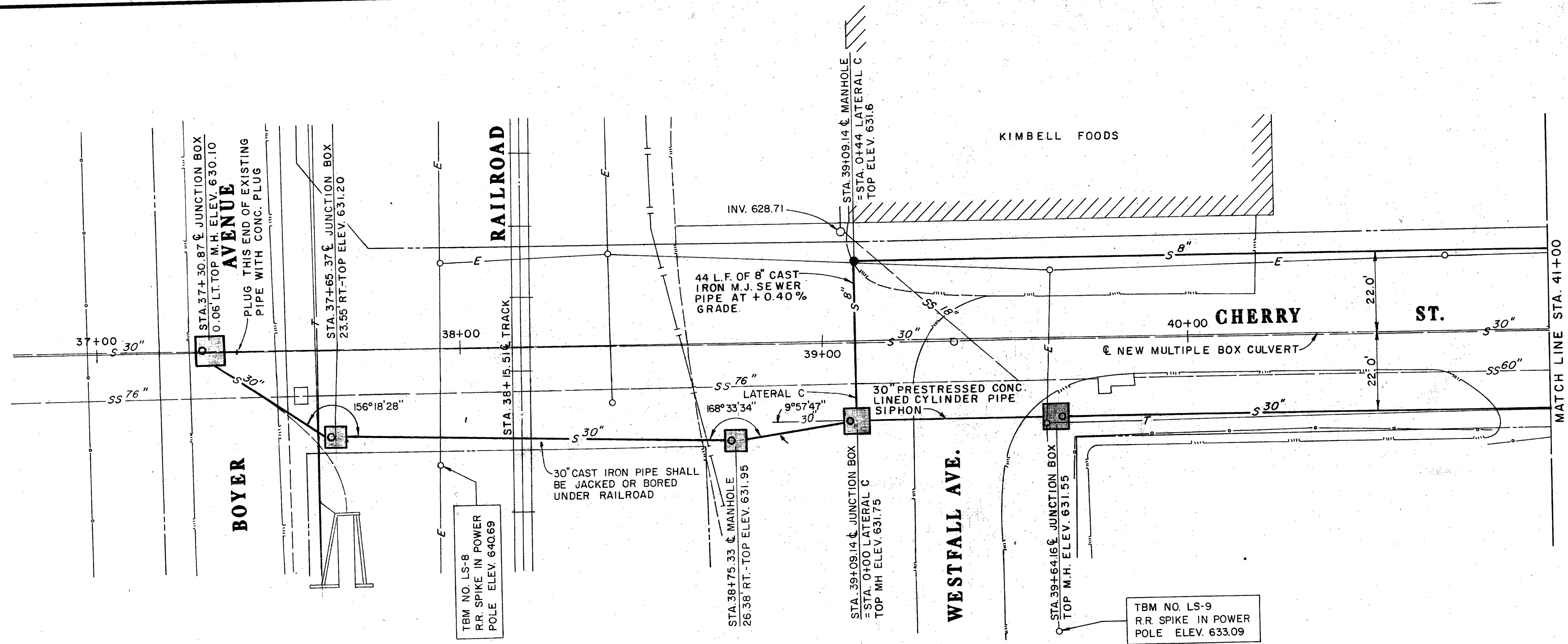
LEGEND

EXISTING	ITEM	NEW
	SANITARY SEWER LINE	
	SANITARY SEWER MANHOLE	
	JUNCTION BOX	

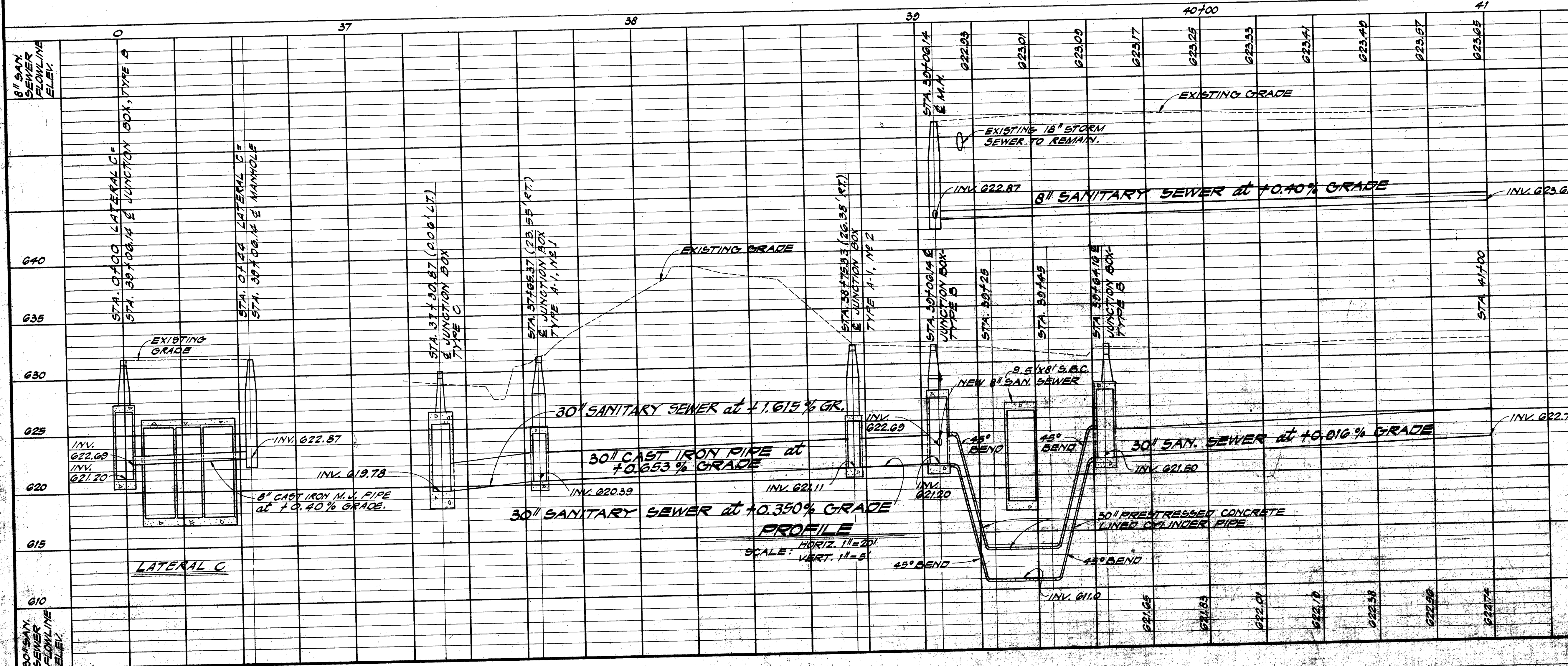
AS BUILT
DATE: AUGUST 1, 1981



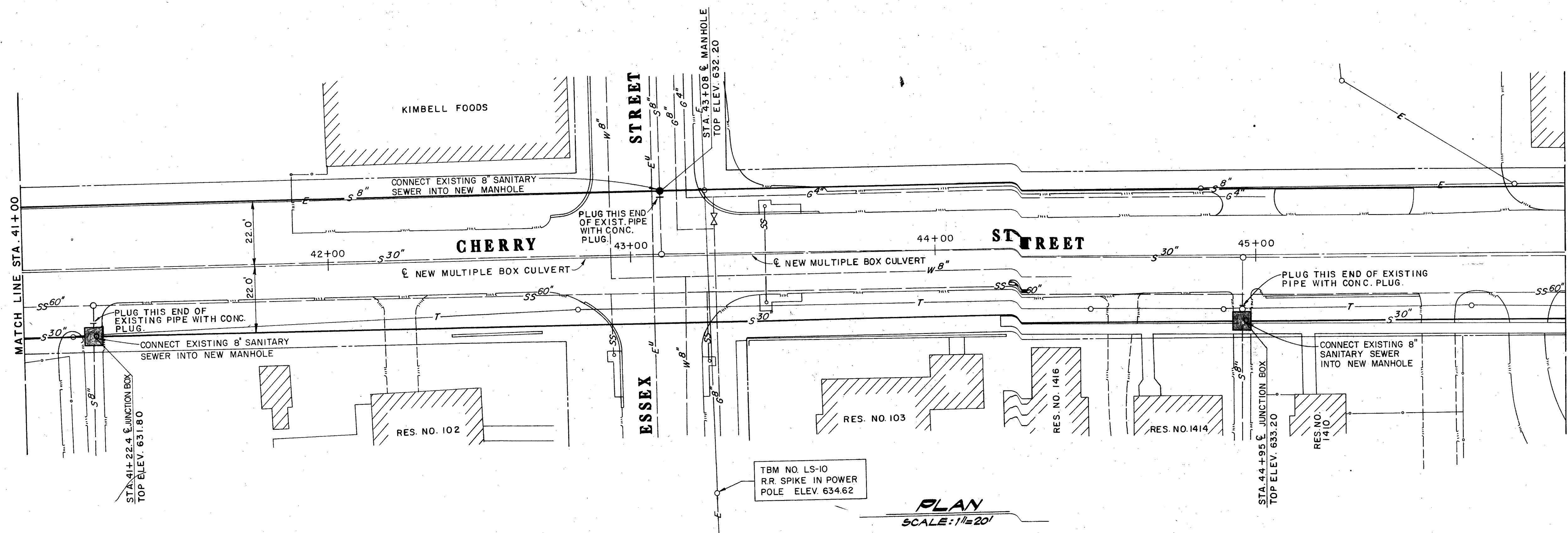
K. M. NG & ASSOCIATES, INC. CONSULTING ENGINEERS SAN ANTONIO, TEXAS		DEPARTMENT OF PUBLIC WORKS CITY OF SAN ANTONIO BEXAR COUNTY, TEXAS	
STORM DRAINAGE PROJECT NO. 15			
LONE STAR BLVD. OUTFALL			
SANITARY SEWER			
STA. 9+25 TO STA. 13+60			
DRAWN BY: E. S., R.S.L.	DATE	REVISIONS	SCALE: AS SHOWN
CHECKED BY: K. M. N.			DATE: MAY, 1974
			SHEET 39 OF 119



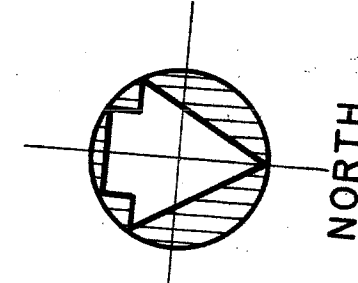
AS BUILT
DATE: AUGUST 1, 1981



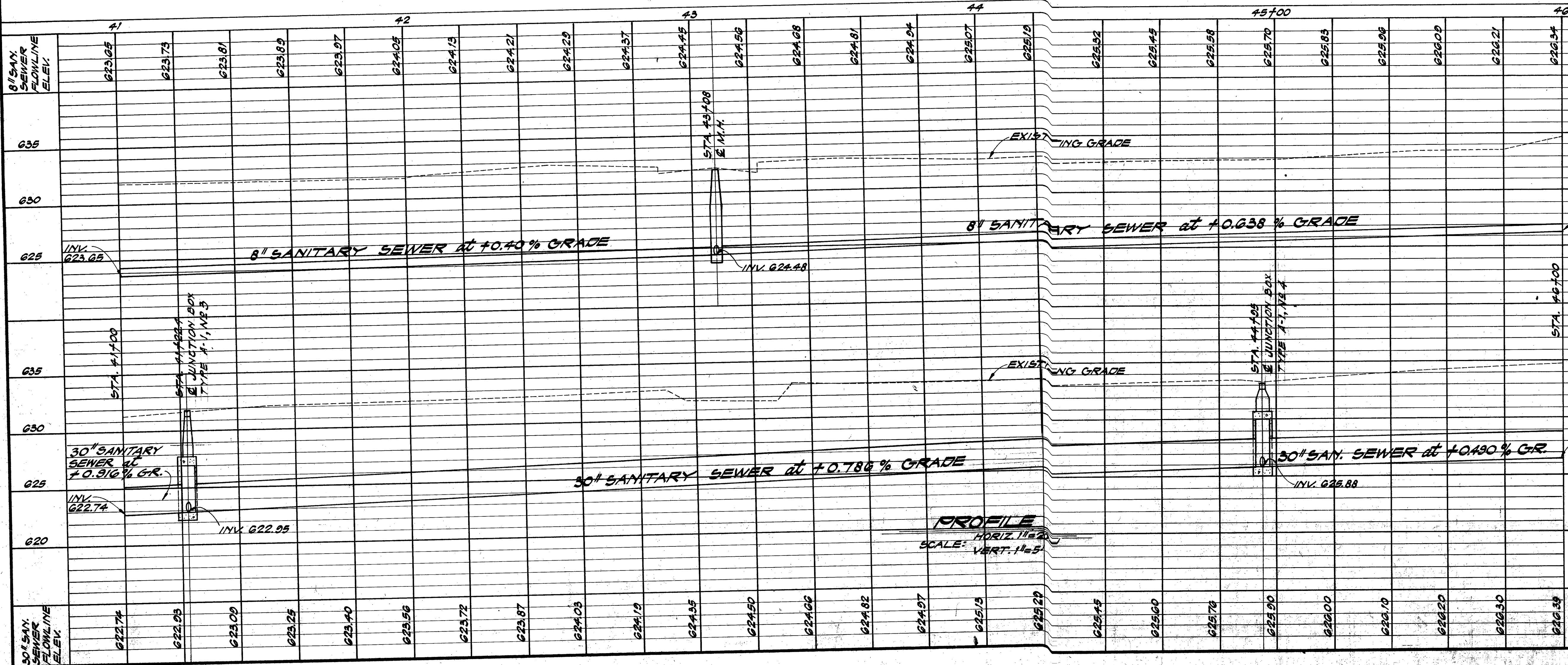
K. M. NG & ASSOCIATES, INC. CONSULTING ENGINEERS SAN ANTONIO, TEXAS		DEPARTMENT OF PUBLIC WORKS CITY OF SAN ANTONIO BEXAR COUNTY, TEXAS	
STORM DRAINAGE PROJECT NO. 15			
LONE STAR BLVD. OUTFALL			
SANITARY SEWER			
STA. 37+22.4 TO STA. 41+00			
DRAWN BY: E. S. R. S. L.	DATE: 5-16-76	REVISIONS: ADD J.B. - A1	SCALE: AS SHOWN
CHECKED BY: K. M. N.	DATE: 10-2-78	REVISIONS: CORRECTION & GEN. REV.	DATE: MAY, 1974
SHEET NO. 40 OF 119		SHEET NO. 40 OF 119	



PLAN
SCALE: 1"=20'



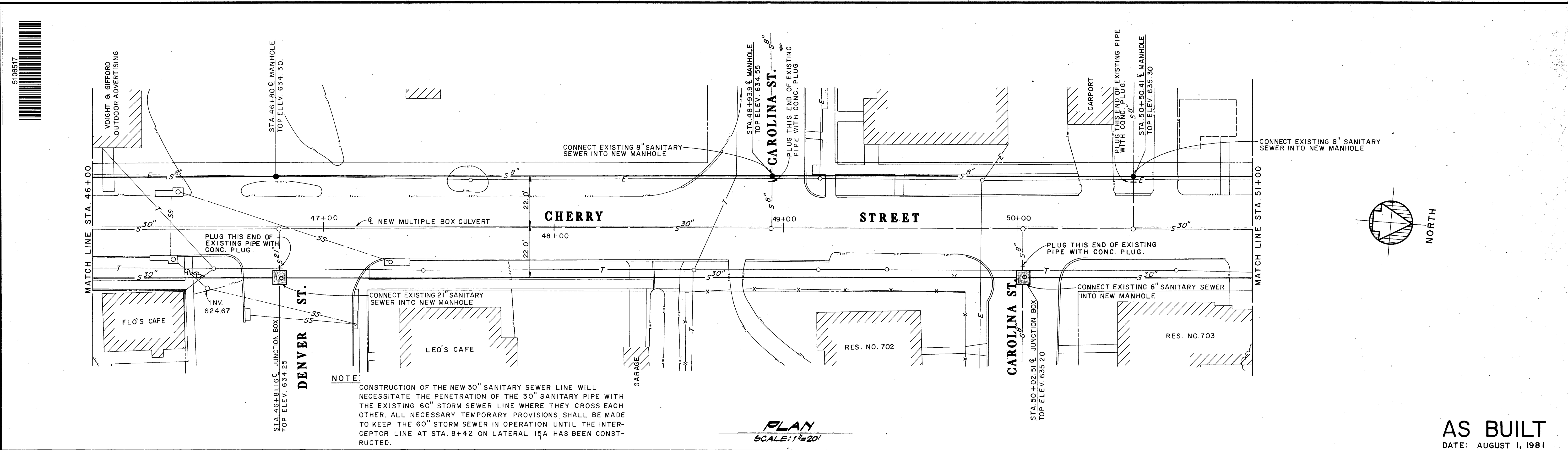
AS BUILT
DATE: AUGUST 1, 1981



PROFILE
HORIZ. 1"=20'
SCALE: VERT. 1"=5'



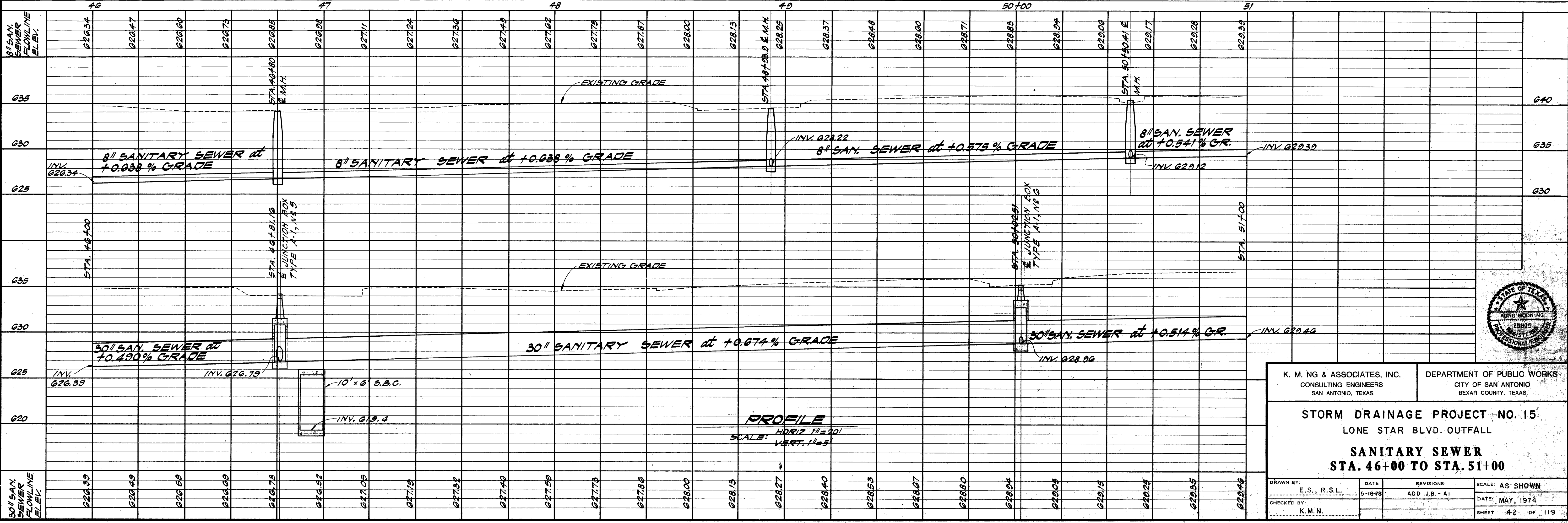
K. M. NG & ASSOCIATES, INC. CONSULTING ENGINEERS SAN ANTONIO, TEXAS		DEPARTMENT OF PUBLIC WORKS CITY OF SAN ANTONIO BEXAR COUNTY, TEXAS	
STORM DRAINAGE PROJECT NO. 15			
LONE STAR BLVD. OUTFALL			
SANITARY SEWER			
STA. 41+00 TO STA. 46+00			
DRAWN BY: E.S., R.S.L.	DATE: 5-16-78	REVISIONS: ADD J.B. - AI	SCALE: AS SHOWN
CHECKED BY: K.M.N.		DATE: MAY, 1974	SHEET 41 OF 119



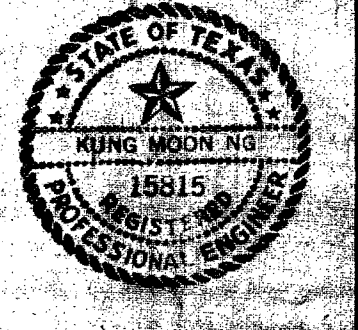
NOTE:
 CONSTRUCTION OF THE NEW 30" SANITARY SEWER LINE WILL NECESSITATE THE PENETRATION OF THE 30" SANITARY PIPE WITH THE EXISTING 60" STORM SEWER LINE WHERE THEY CROSS EACH OTHER. ALL NECESSARY TEMPORARY PROVISIONS SHALL BE MADE TO KEEP THE 60" STORM SEWER IN OPERATION UNTIL THE INTERCEPTOR LINE AT STA. 8+42 ON LATERAL 15A HAS BEEN CONSTRUCTED.

PLAN
 SCALE: 1"=20'

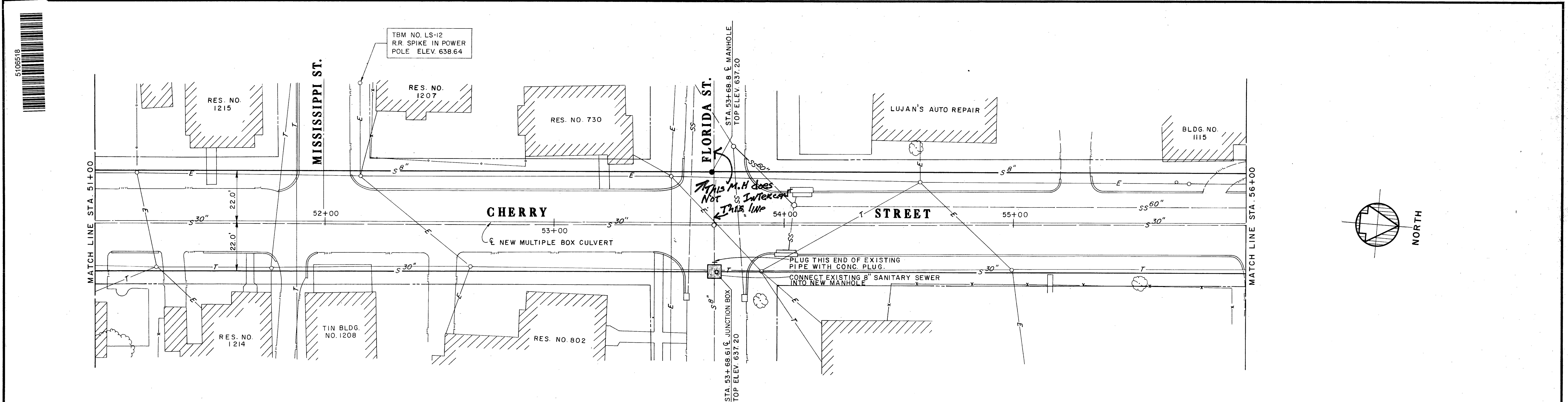
AS BUILT
 DATE: AUGUST 1, 1981



PROFILE
 SCALE: HORIZ. 1"=20'
 VERT. 1"=5'

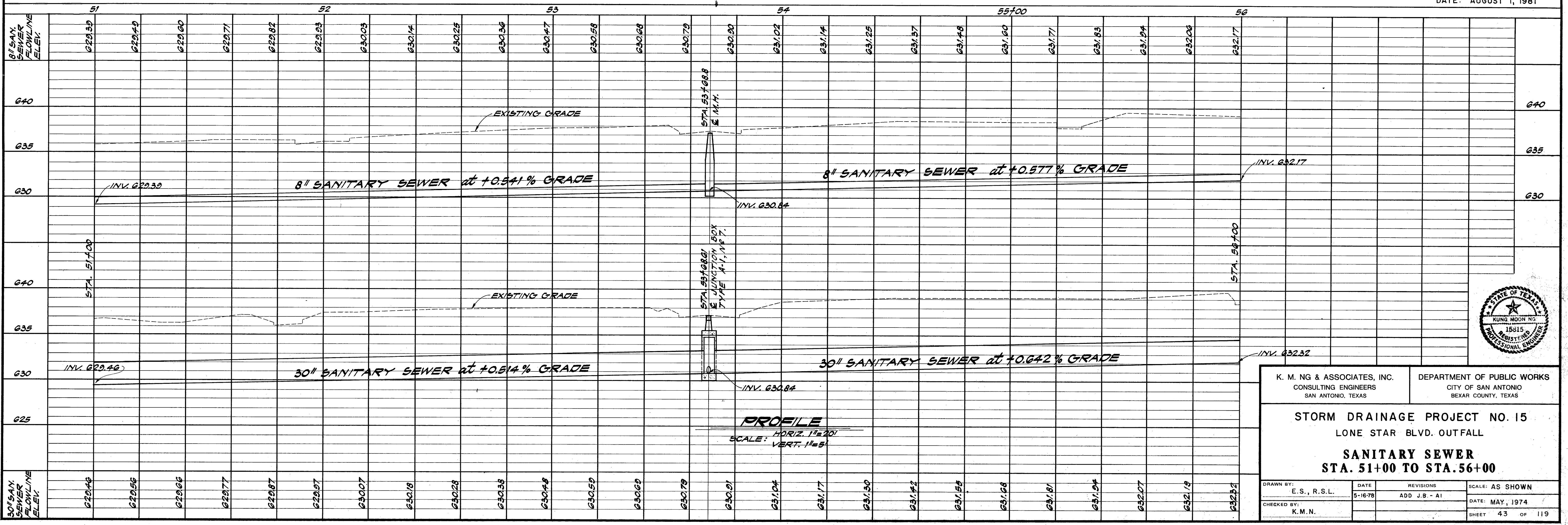


K. M. NG & ASSOCIATES, INC. CONSULTING ENGINEERS SAN ANTONIO, TEXAS		DEPARTMENT OF PUBLIC WORKS CITY OF SAN ANTONIO BEXAR COUNTY, TEXAS	
STORM DRAINAGE PROJECT NO. 15 LONE STAR BLVD. OUTFALL			
SANITARY SEWER STA. 46+00 TO STA. 51+00			
DRAWN BY: E. S. R.S.L.	DATE: 5-16-78	REVISIONS: ADD J.B. - A1	SCALE: AS SHOWN
CHECKED BY: K. M. N.			DATE: MAY, 1974
			SHEET 42 OF 119

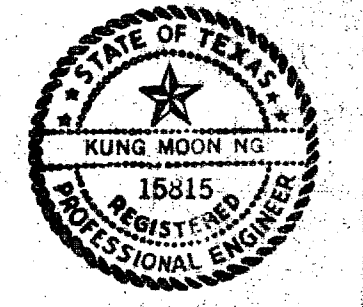


PLAN
SCALE: 1"=20'

AS BUILT
DATE: AUGUST 1, 1981



PROFILE
HORIZ. 1"=20'
SCALE: VERT. 1"=5'

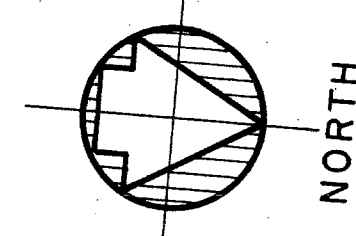
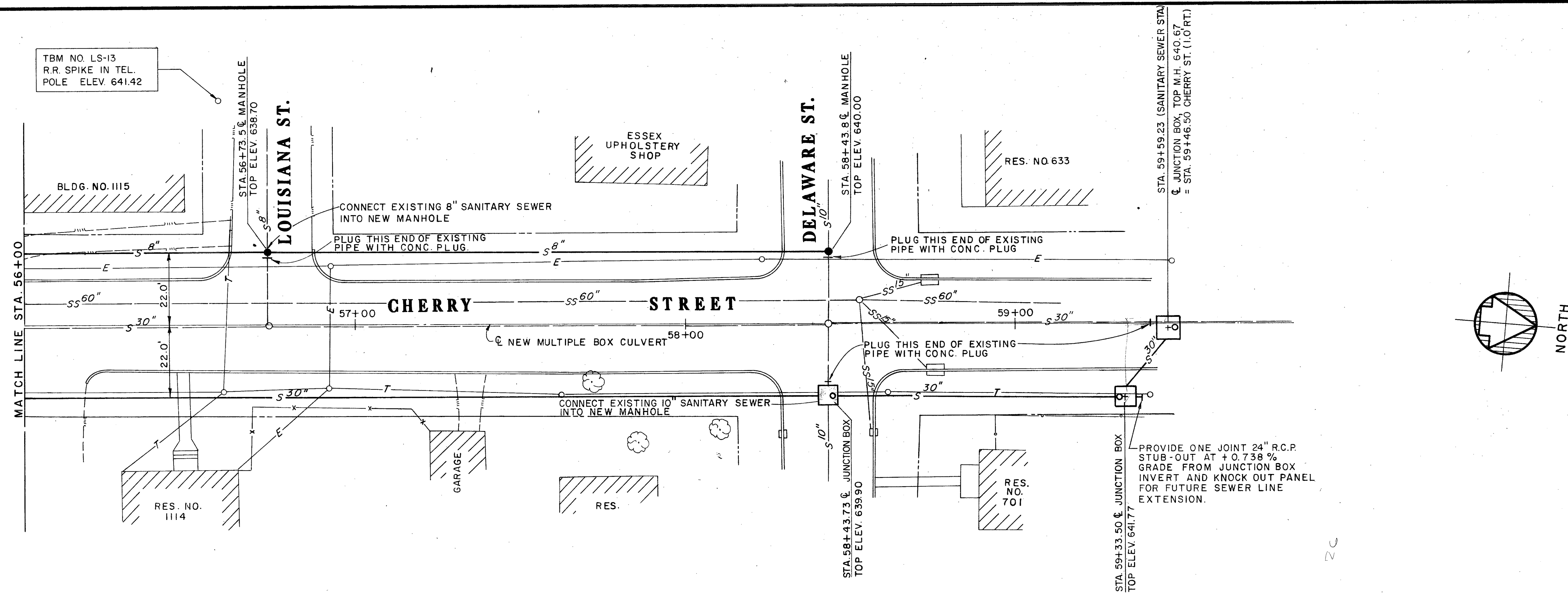


K. M. NG & ASSOCIATES, INC.
CONSULTING ENGINEERS
SAN ANTONIO, TEXAS

DEPARTMENT OF PUBLIC WORKS
CITY OF SAN ANTONIO
BEXAR COUNTY, TEXAS

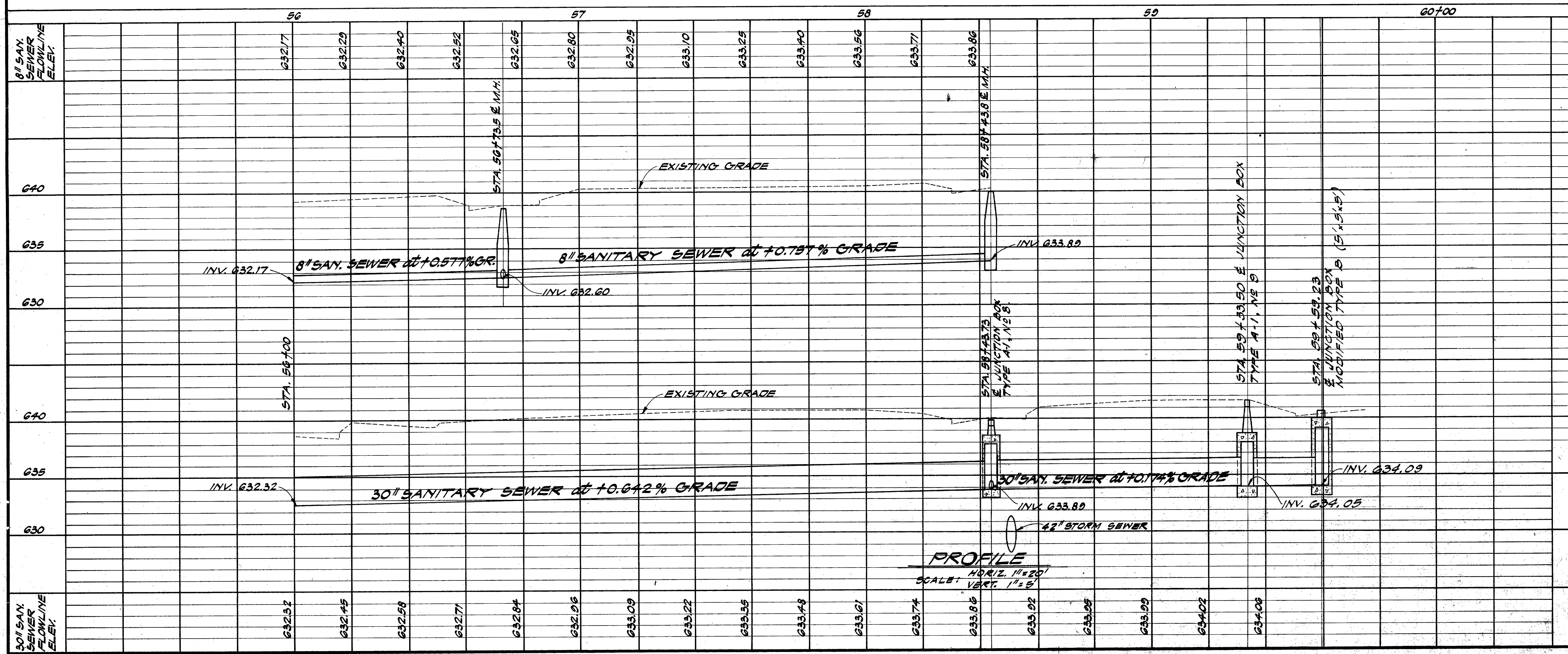
STORM DRAINAGE PROJECT NO. 15
LONE STAR BLVD. OUTFALL
SANITARY SEWER
STA. 51+00 TO STA. 56+00

DRAWN BY: E. S., R.S.L. DATE: 5-16-78 REVISIONS: ADD J.B. - AI SCALE: AS SHOWN
CHECKED BY: K.M.N. DATE: MAY, 1974 SHEET 43 OF 119



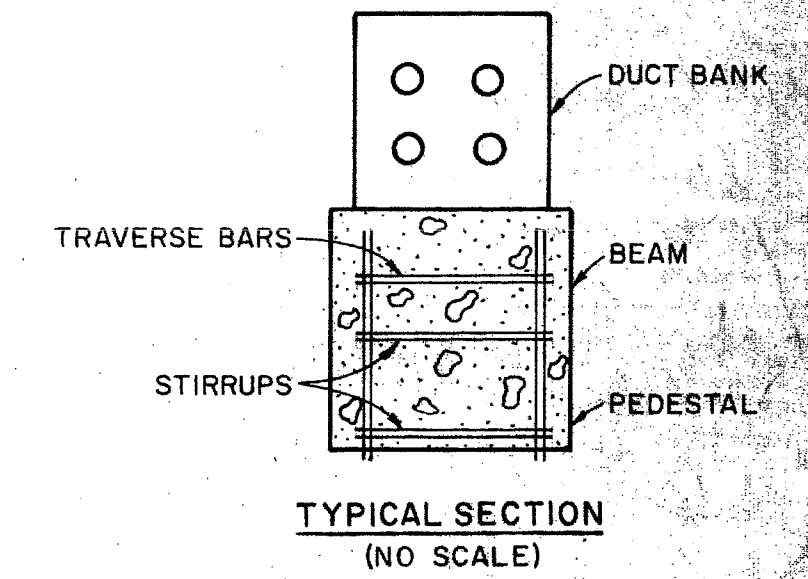
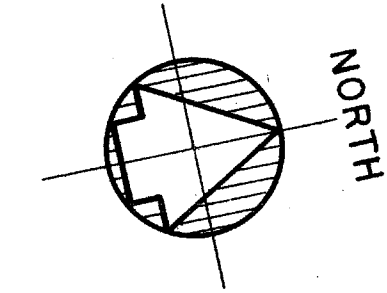
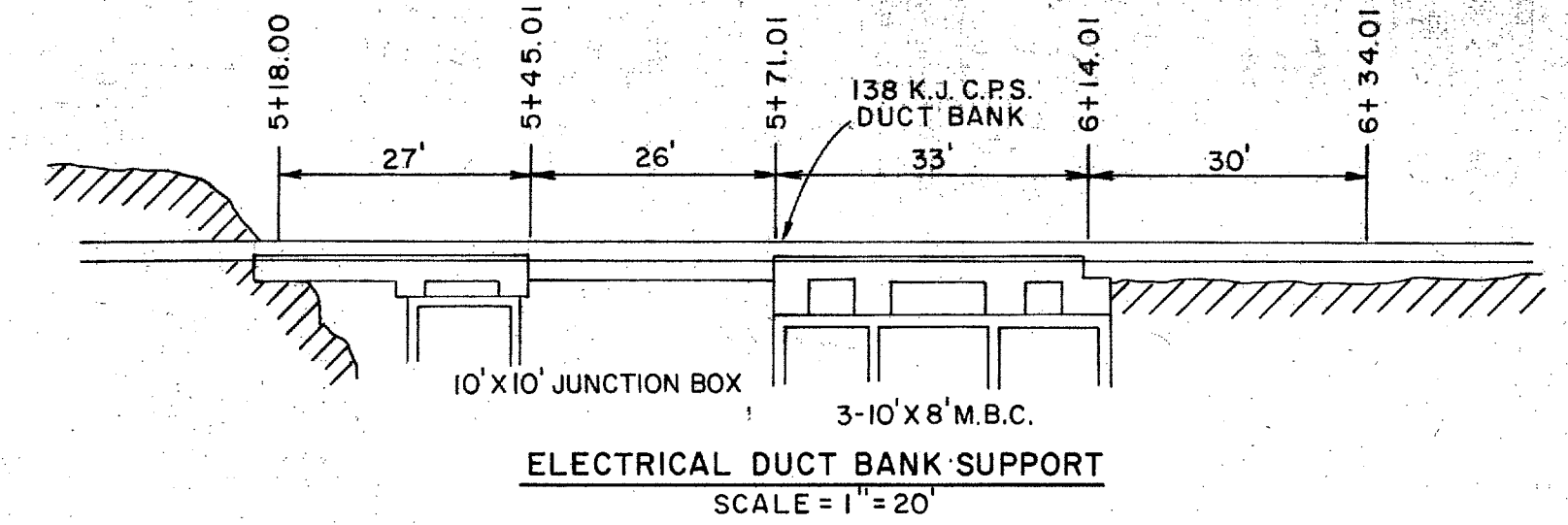
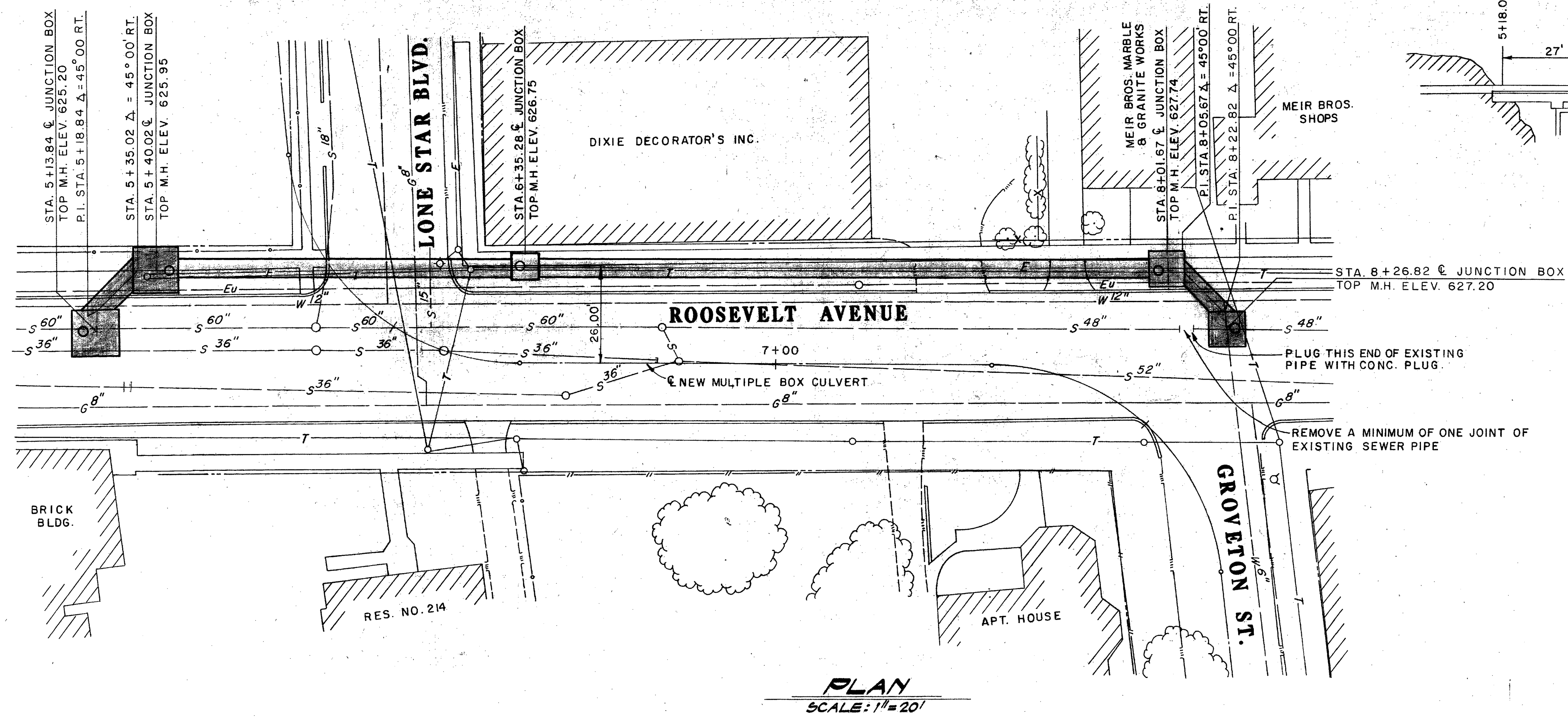
PLAN
SCALE: 1"=20'

AS BUILT
DATE: AUGUST 1, 1981



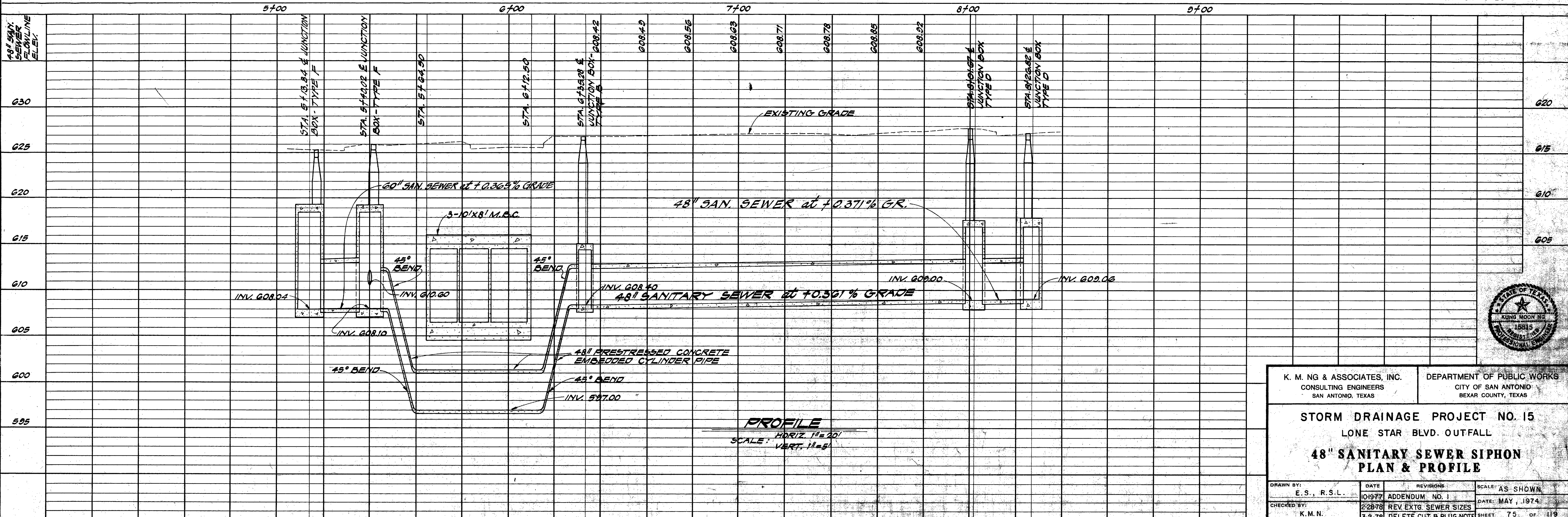
K. M. NG & ASSOCIATES, INC. CONSULTING ENGINEERS SAN ANTONIO, TEXAS		DEPARTMENT OF PUBLIC WORKS CITY OF SAN ANTONIO BEXAR COUNTY, TEXAS	
STORM DRAINAGE PROJECT NO. 15 LONE STAR BLVD. OUTFALL			
SANITARY SEWER STA. 56+00 TO STA. 59+64.1			
DRAWN BY: E.S., R.S.L.	DATE: 5-16-78	REVISIONS: ADD J.B. - A-1	SCALE: AS SHOWN
CHECKED BY: K.M.N.	DATE: 5-8-79	RELOCATE TYPE "B" J.B.	DATE: MAY, 1974
	DATE: 8-10-79	RELOCATE TYPES "B" & "A" J.B.	SHEET 44 OF 119

5121831

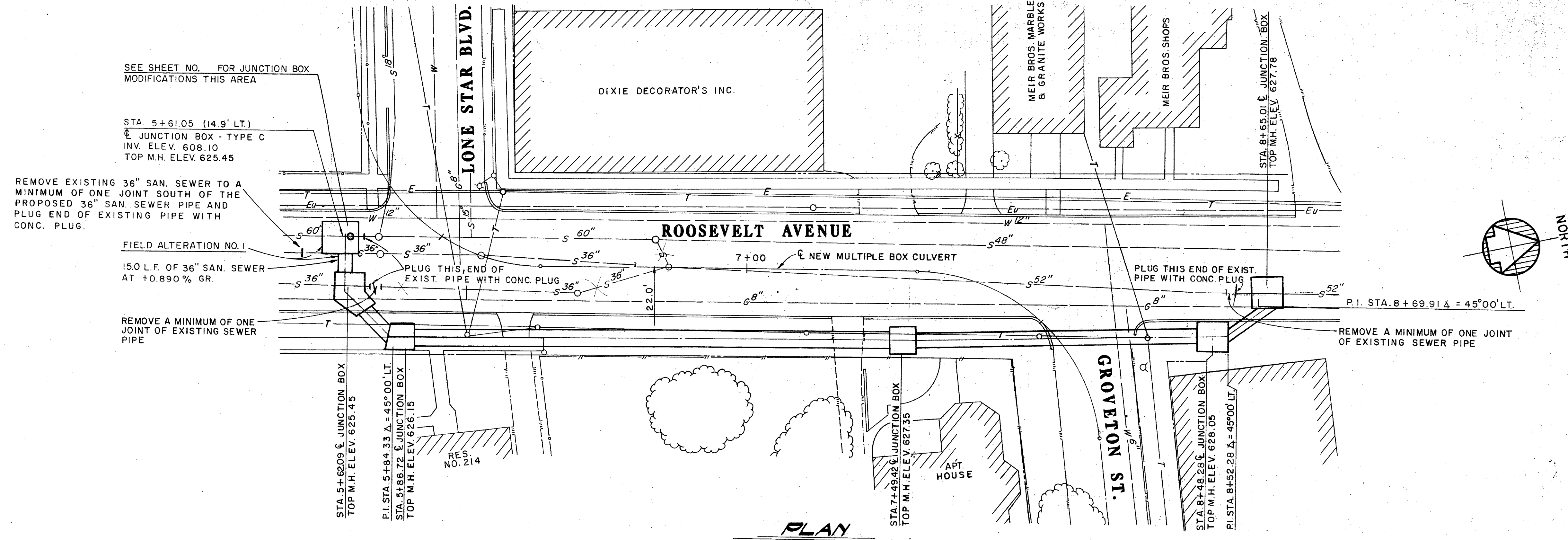


AS BUILT
DATE: AUGUST 1, 1981

1-2-79 SHIFT 48" SAN. SEWER LINE 1 FOOT TO THE WEST
8-28-78 ADDED TYPE D & F JUNCTION BOXES



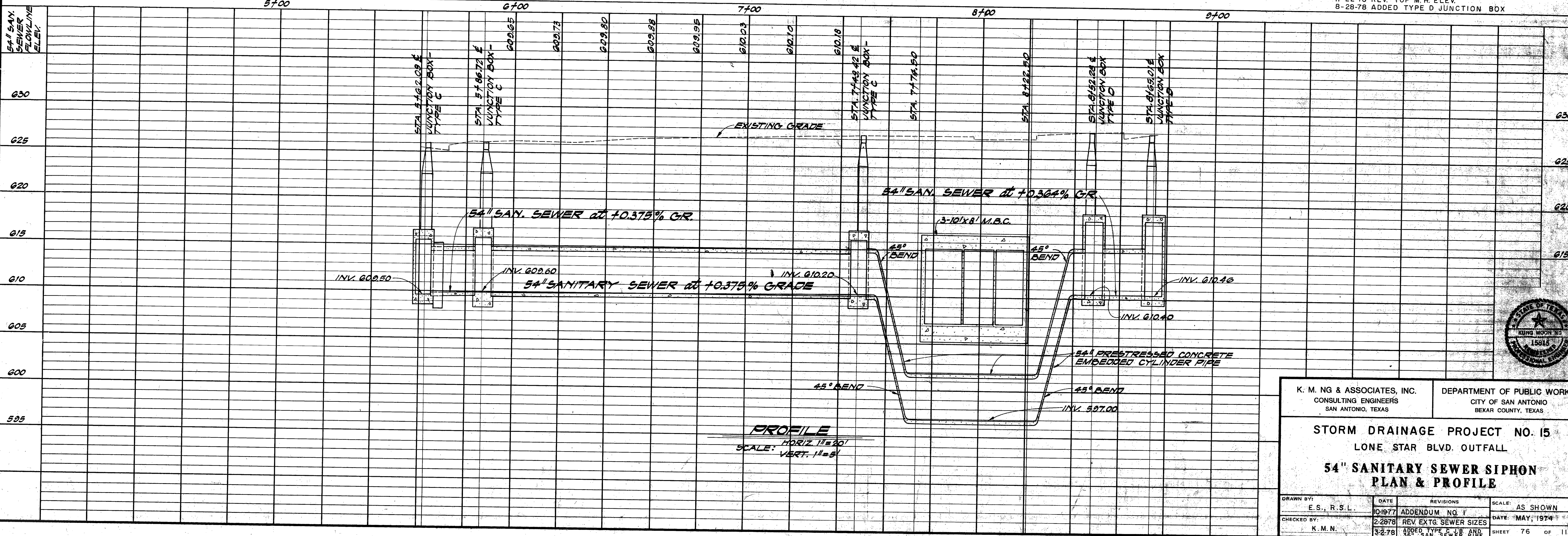
K. M. NG & ASSOCIATES, INC. CONSULTING ENGINEERS SAN ANTONIO, TEXAS		DEPARTMENT OF PUBLIC WORKS CITY OF SAN ANTONIO BEXAR COUNTY, TEXAS	
STORM DRAINAGE PROJECT NO. 15 LONE STAR BLVD. OUTFALL			
48" SANITARY SEWER SIPHON PLAN & PROFILE			
DRAWN BY: E. S. R. S. L.	DATE: 01977	REVISIONS: ADDENDUM NO. 1	SCALE: AS SHOWN
CHECKED BY: K. M. N.	DATE: 2-28-78	REV. EXTG. SEWER SIZES	DATE: MAY, 1974
		3-2-78 DELETE CUT & PLUG NOTE	SHEET 75 OF 119



PLAN
SCALE: 1"=20'

AS BUILT
DATE: AUGUST 1, 1981

11-22-78 REV. TOP M.H. ELEV.
8-28-78 ADDED TYPE D JUNCTION BOX



PROFILE
SCALE: HORIZ. 1"=20'
VERT. 1"=5'



K. M. NG & ASSOCIATES, INC. CONSULTING ENGINEERS SAN ANTONIO, TEXAS		DEPARTMENT OF PUBLIC WORKS CITY OF SAN ANTONIO BEKAR COUNTY, TEXAS	
STORM DRAINAGE PROJECT NO. 15 LONE STAR BLVD. OUTFALL			
54" SANITARY SEWER SIPHON PLAN & PROFILE			
DRAWN BY: E.S., R.S.L.	DATE: 01-19-77	REVISIONS: ADDENDUM NO. 1	SCALE: AS SHOWN
CHECKED BY: K. M. N.	DATE: 2-28-78	REV. EXTG. SEWER SIZES	DATE: MAY, 1974
		3-2-78 30" & 36" SAN. SEWER AND	SHEET 76 OF 119